



# TINY LIFE

EMILY SCHLESINGER

# TABLE OF CONTENTS

<b>Chapter 1</b>	
Taking Over.....	2
<b>Chapter 2</b>	
Hidden World.....	8
<b>Chapter 3</b>	
Tiny Castles.....	12
<b>Chapter 4</b>	
Stunning Shapes.....	18
<b>Chapter 5</b>	
Sea Sparkles.....	24
<b>Chapter 6</b>	
Small but Strong.....	28
<b>Chapter 7</b>	
Water Bears.....	34
<b>Chapter 8</b>	
Face It.....	38
<b>Chapter 9</b>	
The World Inside.....	42
<b>Chapter 10</b>	
Job of the Future.....	46
<b>Glossary</b> .....	50

# Chapter 1

## TAKING OVER

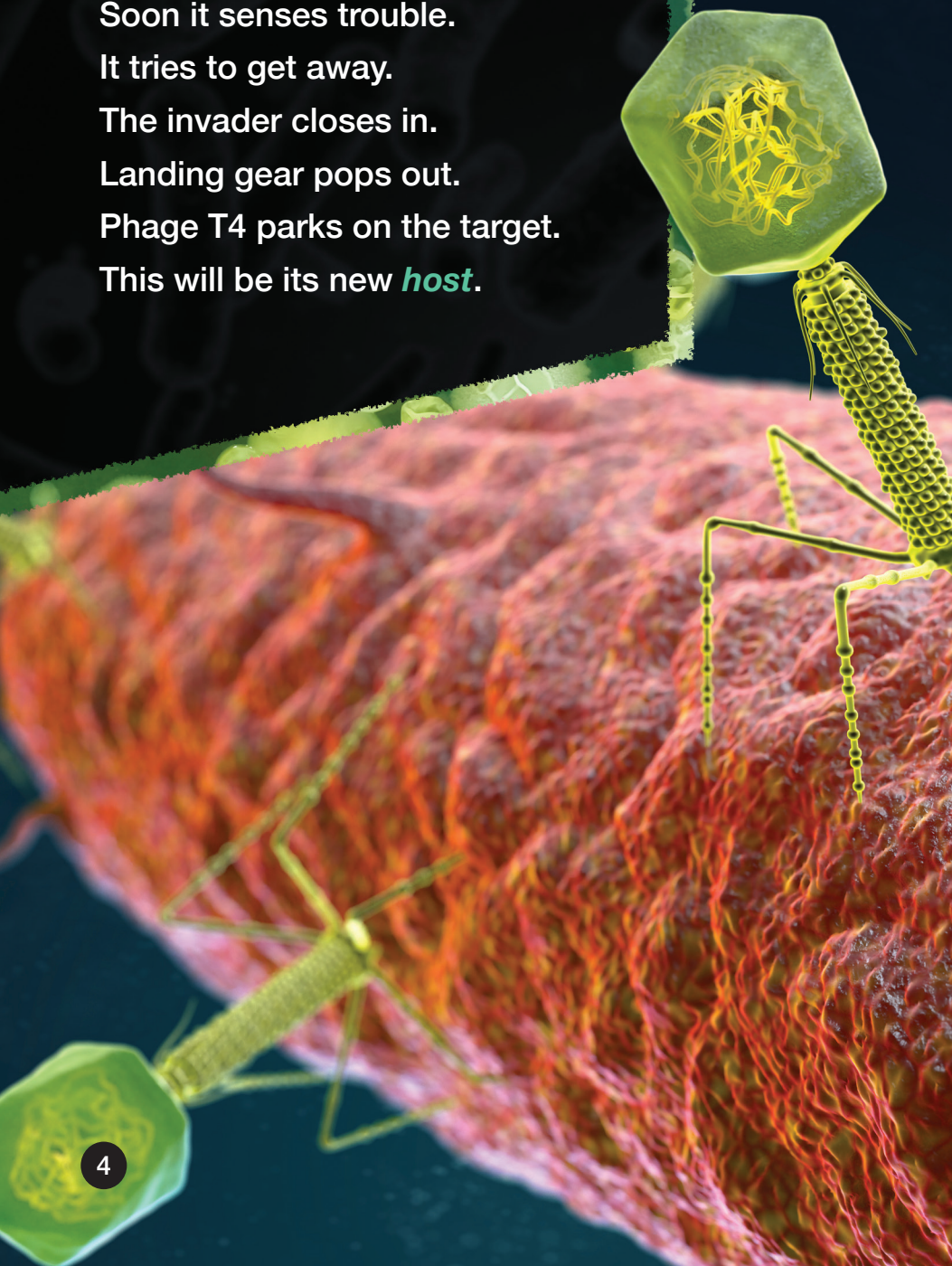
An *invader* sails down.  
This is a sleek machine.  
It looks like a spaceship.  
But it acts like a robot.

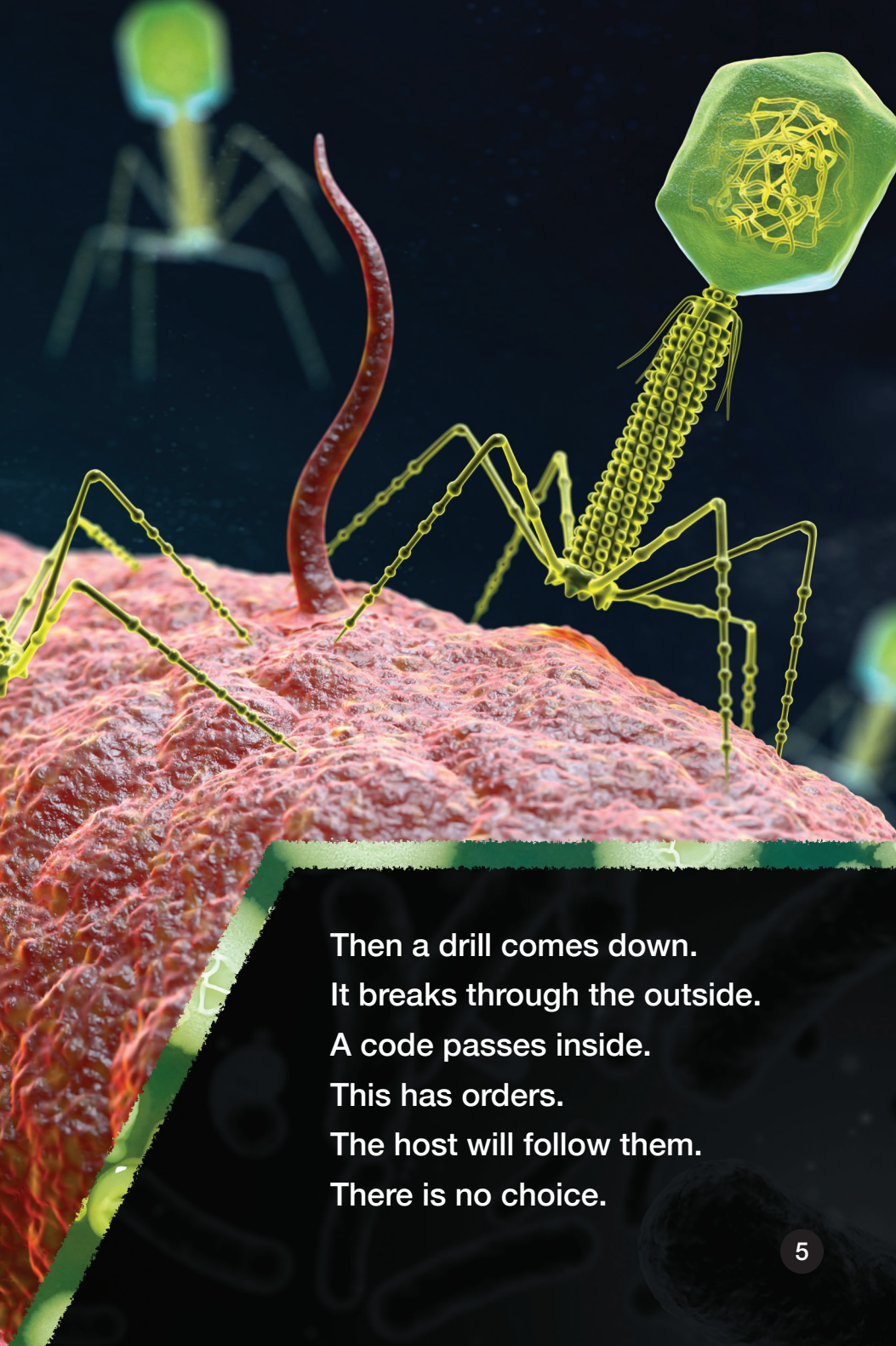
A coil is at the center.  
Skinny legs hang off.  
On top is a control room.  
This has 20 sides.

*Phage* T4 is its name.  
This means “one that eats.”



A target comes near.  
Soon it senses trouble.  
It tries to get away.  
The invader closes in.  
Landing gear pops out.  
Phage T4 parks on the target.  
This will be its new *host*.





Then a drill comes down.  
It breaks through the outside.  
A code passes inside.  
This has orders.  
The host will follow them.  
There is no choice.

Work begins inside.  
The host makes parts.  
They match the code.  
It puts them together.  
These are more phage T4s.

Then the host dies.  
The new invaders sail on.  
They join a growing army.



Some think this sounds like a movie.  
But phages are real.  
They are part of a hidden world.  
This cannot be seen with the eye.  
It is the world of tiny life forms.

